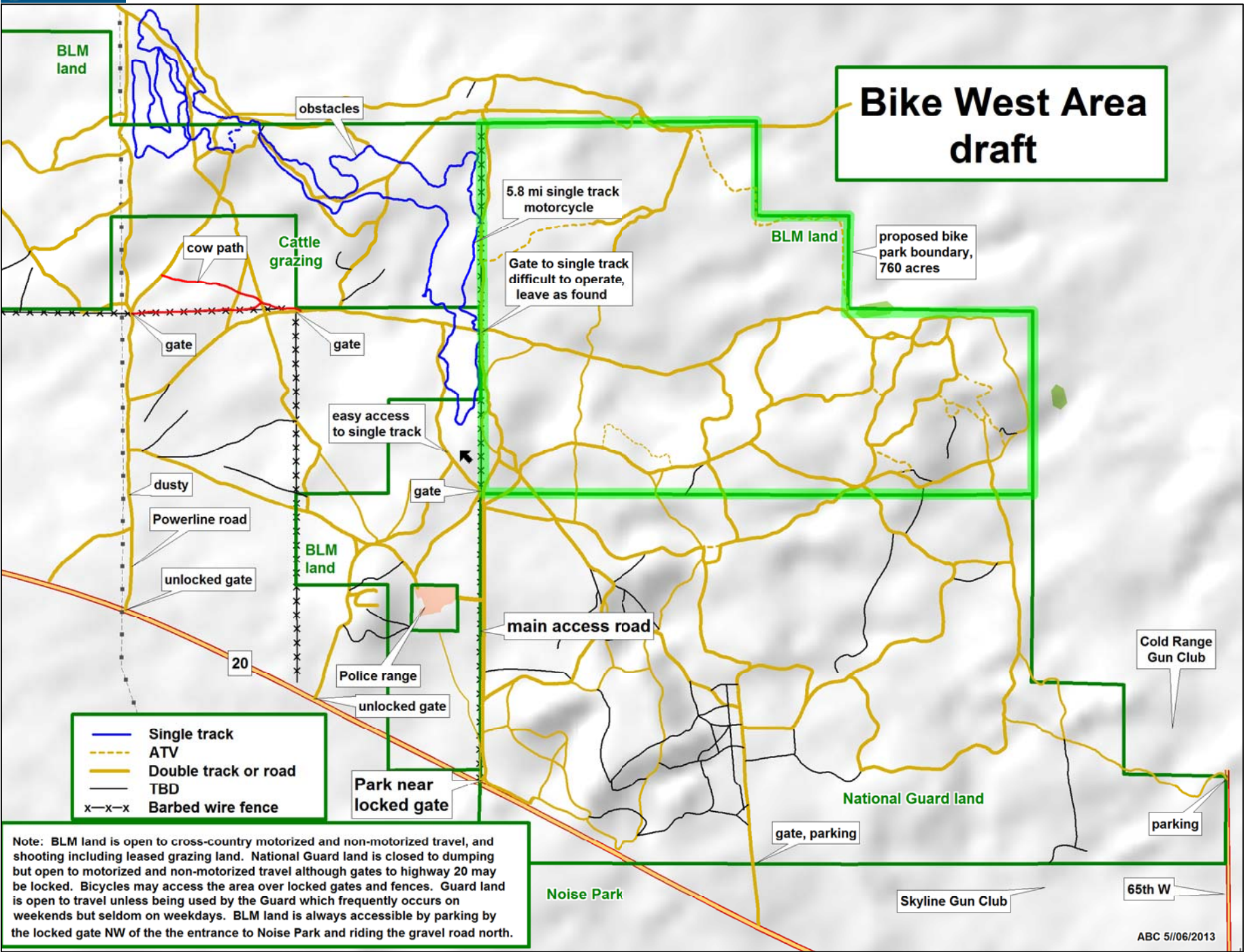


Bike West Area draft



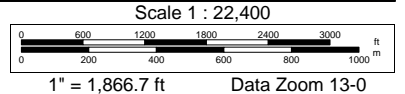
- Single track
- - - ATV
- Double track or road
- TBD
- x-x-x Barbed wire fence

Note: BLM land is open to cross-country motorized and non-motorized travel, and shooting including leased grazing land. National Guard land is closed to dumping but open to motorized and non-motorized travel although gates to highway 20 may be locked. Bicycles may access the area over locked gates and fences. Guard land is open to travel unless being used by the Guard which frequently occurs on weekends but seldom on weekdays. BLM land is always accessible by parking by the locked gate NW of the the entrance to Noise Park and riding the gravel road north.

Data use subject to license.

© DeLorme. XMap® 6.

www.delorme.com



ABC 5/06/2013